

Benefits:

- Optimal investment protection for smart metering infrastructure
- Flexible meter integration (electricity, gas, water, heat)
- Efficient communication with central sites via LAN/DSL
- Compliant with
 - Open Metering Communication
 - EN 62056-21 (IEC1107).
 - EN 13757-3/4 (W-MBus)
- Flexible integration with home area networks and customer display units
- Firmware architecture and interface design based on common Internet standards
- Proven and reliable hardware
- Easy installation

Key Features:

- Modular architecture separating the gateway from the meter
- Wired meter interface (RS485)
- DLMS protocol support
- 1107 protocol support
- Wireless M-Bus interface
- Two Ethernet interfaces (local and WAN)
- Support for Internet standards
 - TCP/IP, SSH
 - HTTP/XML
 - NTP
 - DHCP, PPPoE
 - DynDNS, STUN
- Security features
 - HTTPS, firewall, IP white list
 - AES encryption
- Operating status signaled by LEDs
- Remote firmware update
- Alarm messages and logging



The gMUC-DSL controller from Dr. Neuhaus Telekommunikation GmbH enables multi-line wireless remote data reading from domestic supply meters via LAN/DSL connections. Measurement values for electricity, gas, water and heat are automatically transmitted to one or more central locations using common Internet standards.

Meters are connected by wire (RS485) or via short-range radio (wireless M-Bus). Other technologies and interfaces, such as ZigBee or RS232, are available upon request. The device can be configured and administered remotely. A local interface enables direct access to measurement values for end customers (e.g. PC, display solutions, mobile devices).

The gMUC-DSL controller meets all requirements of large-scale deployments. When mounting the gateways locally in households, only cables need to be connected.

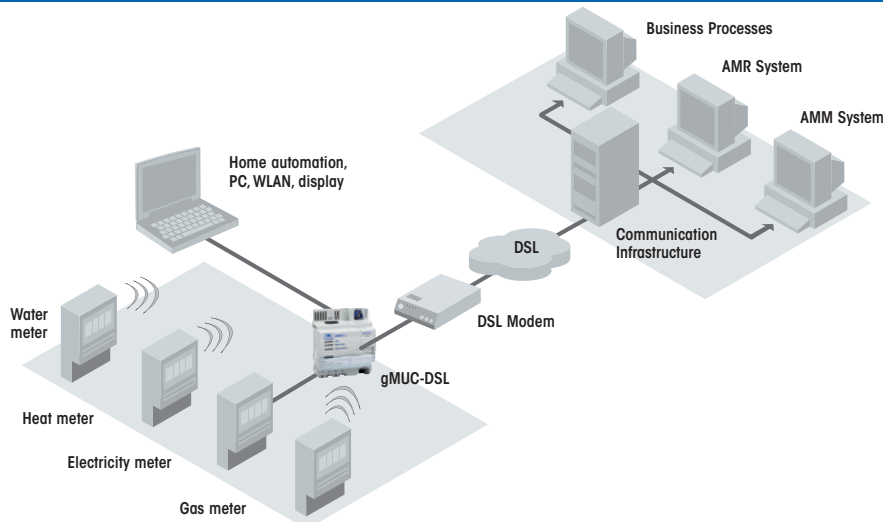
The gMUC-DSL controller is a state-of-the-art communication module based on proven hardware, and it complies with European Smart Metering standardization activities.



System components

- gMUC-DSL
- Antenna for wireless communication with meters
- DSL modem or DSL router

Topology



Technical data

INTERFACE

| | |
|---------------------------------|---|
| Meter Interface Wired | RS485 – RJ10 (jack) for elec. supply meter: Speed: 300 to 115,200 baud (adjustable) data format: Adjustable; |
| Meter Interface Wireless | Wireless M-Bus: S mode, T mode; bidirectional communication; meter and sensor connection; |
| Customer Interface | Ethernet interface 10/100 Base T as RJ45; auto crossover; communication: XML/HTTP(S) |
| WAN Interface | GSM/GPRS or Ethernet interface; communication: XML/HTTP; authentication via HTTP digest; encryption via HTTPS (X.509 certificates); support for static and for dynamic IP addresses (DHCP client); PPPoE for communication via DSL router |
| Power supply | Device input voltage: Un 195 – 253 VAC (single-phase connection, spring terminals), Fn 50 Hz; power consumption: 2.5 watts (typical), 5 watts (peak) |

FUNCTIONALITY

| | |
|------------------------|---|
| Configuration | Browser based, via Customer- or WAN interface |
| Meter Reading | Local recording in gMUC controller, flexibly configurable. Data available through Customer- and WAN interface |
| Clock | Real time clock; 48h power reserve; time synchronization via NTP or locally |
| Firmware Update | Local or remote |

APPROVALS

| | |
|---------------------------------|---|
| Environmental Conditions | Operation –20 °C to +65 °C (>55°C derating); humidity 0-95%, non-condensing |
| Approvals | CE; EN 55024; EN 55022 Class A; EN 61000-6-2; EN 60950 |

MECHANICS

| | |
|------------------|---|
| Mechanics | Top hat rail mounting; enclosure: plastic; protection class: IP40; dimensions: approx. 114.5 x 22.5 x 99 mm (D x W x H); weight: approx. 150g |
|------------------|---|

MISCELLANEOUS

| | |
|--------------------------|---|
| Accessories | Various antennas |
| Scope of delivery | Device; installation guide; access to download area |
| Order number | gMUC-DSL, item no. 819011 |

Subject to technical modification. All data are based on manufacturer's specifications. No guarantee or liability for incorrect entries or omissions. All deliveries and services are provided by Dr. Neuhaus Telekommunikation GmbH on the basis of the "General Terms and Conditions" in the current version. All product names are trademarks of their respective owners. Dr. Neuhaus Telekommunikation GmbH 01/2011, Doc.-No.: 8190AQ011 Rev. 1.1

